

Freshness

Movement



ERIBA-Touring 2008

HYMER
Experience tomorrow today

ERIBA

touring GT



Eriba-Touring	4
Technical highlights	10
Technical data	12
Upholstery materials	15



The classical caravan with the tried and tested concept. Aerodynamic and streamlined with perfect road-holding characteristics.

The Touring range of models offers numerous layout versions. Whatever your requirements may be – you'll find a wide selection of ideas for the interior decor here.





Eriba-Touring



Legendary and with cult status: the Eriba-Touring.

The seasoned AERO system with the steel tube frame has cemented customer confidence in the classical Eriba caravans for 50 years now. Aerodynamic styling, light empty weight, compact dimensions and low overall height thanks to the pop-top solution – these are the characteristics of Touring caravans. They offer perfect road-handling and so are tailor-made for carefree travels, even to destinations further afield.







Eriba-Touring

Pontos 660 GT



Encompassing 26 layout versions in six body lengths, the Eriba-Touring range presents an exceptional array of alternatives. The body lengths range between 3.20 m and 4.96 m.

The new Eriba Pontos 660 is a special highlight. HYMER engineers have succeeded in pulling off a „first“ for this compact model range by coming up with a layout integrating a centre bed. This king-size bed is situated at the rear of the vehicle with convenient access from both sides.

To the right and left of the centre bed, there are separate wardrobes behind the bedside cabinets on either side.

The entire bed base folds up effortlessly, cushioned by gas springs, to provide ample storage space underneath. In addition, there is a door at the front of the bed base, enabling you to stow things away conveniently even when the bed is positioned for use.

At the front of the Ponto is a comfortable dinette, which is convertible to form an additional transverse single bed – if you so wish.

A high-quality kitchen and washroom make this caravan a comfortable vehicle even for long trips.

Another new feature is the Lugano pear wood finish for the furniture. Attractive flaps with Noce Bergamo trims, high-quality handles and a complementary light finish for the table and counter tops create a homely atmosphere. The details reveal the quality within.

Practical wall pockets, spot lights and robust coat hooks put the finishing touches to the attractive decor.







Eriba-Touring

Troll 530 GT



Practical comfort on a small footprint. To mark the 50th anniversary, the Touring GT range has been fitted out with elegant furniture in the Lugano pear wood finish.

In the Eriba Troll 530 GT there is a spacious dinette at the front and – on request – a transverse double bed at the rear. Since the front seating group converts easily to form a bed, two spatially distinct sleeping areas are provided.

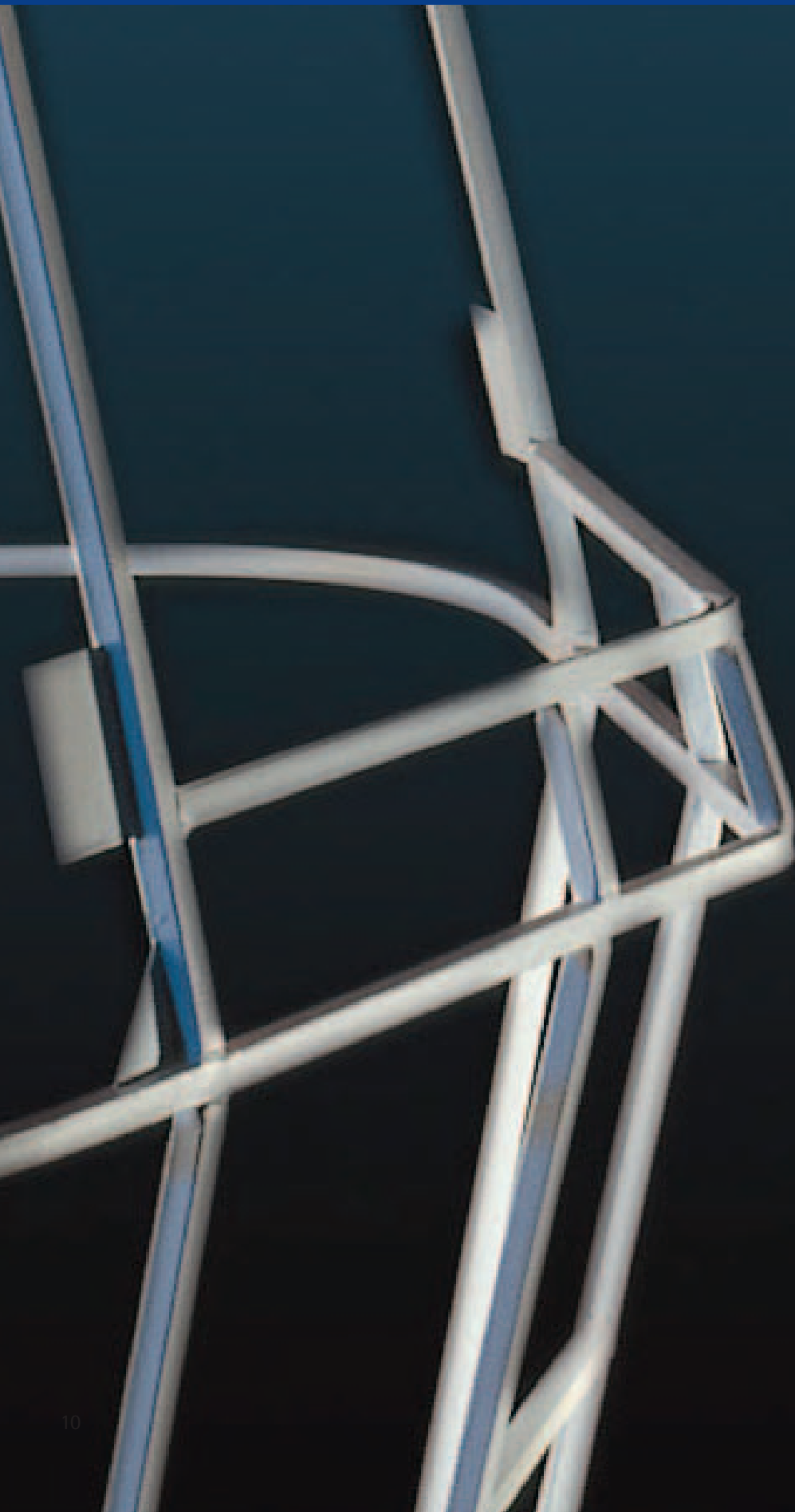
In the middle of the vehicle there are a capacious wardrobe, a washroom and a kitchen with everything one could possibly need. And all this comes with a body length of only 4.71 m.

The kitchen has a circular, stainless steel sink and a 3-burner hob with flame failure safety device and flame shield.

A 70-litre refrigerator rounds off the picture.



Originating from the principles of aircraft construction.



Touring technology

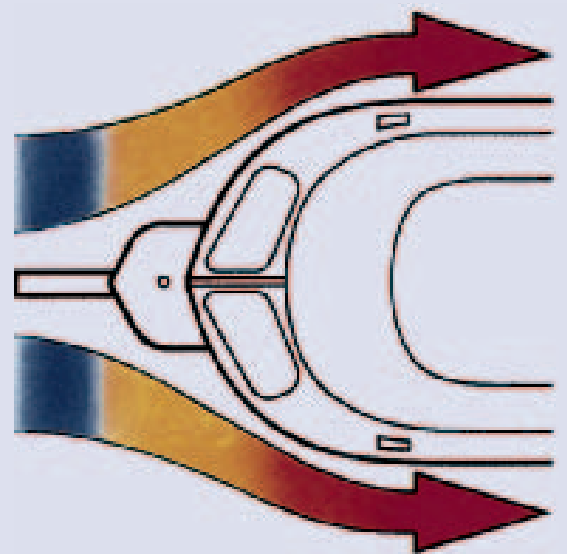


Trend-setting technology from the house of HYMER ensures your caravan a long life and good road-holding characteristics.

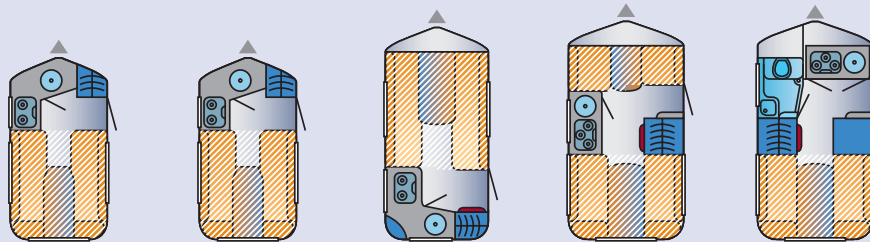
The seasoned AERO system of 50 years' standing with the legendary steel tube frame provides the Eriba-Touring models with the utmost stability.

This light, self-supporting structure resistant to decay has a stove-enamelled aluminium outer skin and a rising roof made of glass-fibre reinforced plastic.

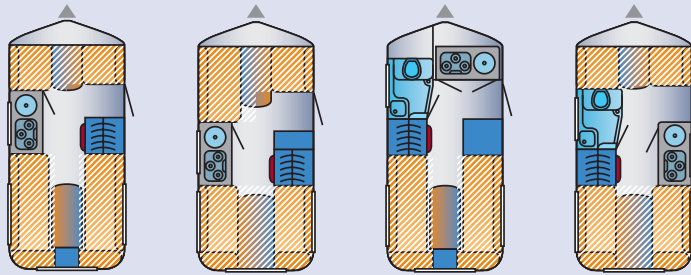
Featuring a low overall height of 1.98 to 2.20 m, the Touring models are mostly of garaging dimensions.



Technical data: Eriba-Touring



	Puck 120	Puck 120 GT	Puck 230 GT	Familia 310 GT	Familia 320 GT
Overall length ca. cm	425	425	475	475	475
Body length approx. cm	320	320	355	362	362
Overall Width approx. cm	165	165	180	200	200
Overall Height approx. cm	198	198	205	220	220
Internal Length approx. cm	315	315	350	357	357
Internal Width approx. cm	155	155	170	190	190
Maximum headroom approx. cm	183	183	187	187	187
Unladen weight approx. kg	450	460	608	660	680
Mass in running order approx. kg	480	490	638	690	710
Maximum permitted laden mass kg	700	700	790/850 (0)	850((0) 900	900
Maximum payload approx. kg	220	210	152/212	160/210	190
Axle	Mono	Mono	Mono	Mono	Mono
Tyre size	155 R 13 79 T	155 R 13 79 T	155R1379T(0165R1382T)	165R 13 82T	165 R 13 82 T
Maximum permitted nose weight	75	75	75	75	75
Floor thickness mm	25	25	25	35	35
Wall/roof insulation approx. mm	25	25	25	25	25
Berths	2	2	2	3	2
Bed size front L x W approx. cm			190/193x170	188x70	
Bed size middle L x W approx. cm					
Bed size rear L x W approx. cm	177/194x150	177/194x150		188x140	188x140
Washroom W x D approx. cm					100x73/68
Wardrobe W x D x H approx. cm	47x100x45	47x100x45	56x92x48	51,5 x 117 x 51	54x117x51
Refrigerator capacity approx. L	60	60	70	70	70
Heating type	S 2200 (0)	S 2200 (0)	S 2200	S 3002	S 3002
Warm water supply					Truma-Therme (0)
Fresh water tank L			(0) 40	(0) 40	(0) 40
Waste water tank L			(0) 20	(0) 40	(0) 40
Awning length approx. cm	575	575	610	635	635



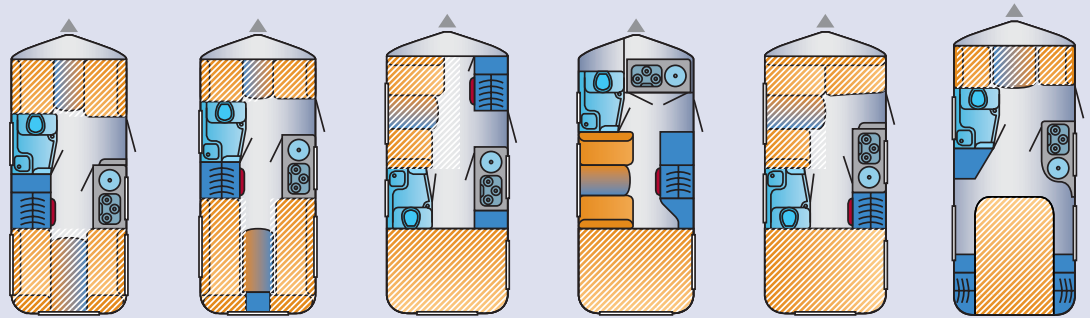
	Triton 410 GT	Triton 418 GT	Triton 420 GT	Triton 430 GT
Overall length ca. cm	518	518	518	518
Body length approx. cm	421	421	421	421
Overall Width approx. cm	200	200	200	200
Overall Height approx. cm	220	220	220	220
Internal Length approx. cm	416	416	416	416
Internal Width approx. cm	190	190	190	190
Maximum headroom approx. cm	187	187	187	187
Unladen weight approx. kg	750	750	780	780
Mass in running order approx. kg	780	780	810	810
Maximum permitted laden mass kg	1000/1200 (O)	1000/1200 (O)	1000/1200 (O)	1000/1200 (O)
Maximum payload approx. kg	220/420	220/420	190/390	190/390
Axle	Mono	Mono	Mono	Mono
Tyre size	185/70R1386T/195/70R1491T	185/70R1386T/195/70R1491T	185/70R1386T/195/70R1491T	185/70R1386T/195/70R1491T
Maximum permitted nose weight	100	100	100	100
Floor thickness mm	35	35	35	35
Wall/roof insulation approx. mm	25	25	25	25
Berths	3	4	2	3
Bed size front L x W approx. cm	188x70	188x120		188x70
Bed size middle L x W approx. cm				
Bed size rear L x W approx. cm	197/190x188(D) 2x197x75(TB)	188x140/147	197/190 x188(D) 2x197x75(TB)	188x140/147
Washroom W x D approx. cm			100x73/68	100x73/68
Wardrobe W x D x H approx. cm	51,5x117x51	54x51x117	54x117x51	54x117x51
Refrigerator capacity approx. L	70	70	70	70
Heating type	S 3002	S 3002	S 3002	S 3002
Warm water supply			Truma-Therme(O)	Truma-Therme (O)
Fresh water tank L	(O) 40	(O) 40	(O) 40	(O) 40
Waste water tank L	(O) 40	(O) 40	(O) 40	(O) 40
Awning length approx. cm	700	700	700	700

*
The Mass in Running Order (MRO) indicated is as per EN 1646 – 2 based on a standard version model and is given for illustration purposes only. Actual specification varies depending on the model chosen. Full details are available from your Hymer dealer.

MRO *
Mass in Running Order in kg includes the weight of the gas cylinder and freshwater tank both to 100% of their capacity (This has been equated to 30 Kg)

S Standard
O Optional
- Not Applicable
D Dinette
TB Twin Beds

Technical Data Eriba-Touring



	Troll 530 GT	Troll 540 GT	Troll 550 GT	Troll 552 GT	Troll 555 GT	Pontos 660 GT
Overall length ca. cm	568	568	576	576	576	596
Body length approx. cm	471	471	471	471	471	491
Overall Width approx. cm	200	200	210	210	210	210
Overall Height approx. cm	220	220	220	220	220	220
Internal Length approx. cm	466	466	466	466	466	486
Internal Width approx. cm	190	190	200	200	200	200
Maximum headroom approx. cm	187	187	187	187	187	187
Unladen weight approx. kg	850	890	910	910	915	860
Mass in running order approx. kg	880	920	940	940	945	890
Maximum permitted laden mass kg	1200	1200	1200/1300 (0)	1200/1300 (0)	1200/1300 (0)	1300/1200 (0)
Maximum payload approx. kg	320	280	260/360	260/360	255/355	410/310
Axle	Mono	Mono	Mono	Mono	Mono	Mono
Tyre size	185 R 14 C 102	185 R 14 C 102	185 R 14 C 102	185 R 14 C 102	185 R 14 C 102	185 R 14 C 102
Maximum permitted nose weight	100	100	100	100	100	100
Floor thickness mm	35	35	35	35	35	35
Wall/roof insulation approx. mm	25	25	25	25	25	25
Berths	3	3	4	2/3 (0)	3 // D 4	3
Bed size front L x W approx. cm	188x93	188x70	180x120		180x120//195x62/50	195x68/60
Bed size middle L x W approx. cm				160 x 90 (0)		
Bed size rear L x W approx. cm	188x140/147	190/197x188 (D) 2x197x75 (TB)	195x140	195 x 140	195x140	195x130
Washroom W x D approx. cm	100x73/68	100x73/68	100x73/68	100x73/68	100x73/68	100x73/68
Wardrobe W x D x H approx. cm	54x117x51	54x117x51	53x117x40	53 x 100 x 52	52 x 117 x 51	35 x 74 x 156 (2x)
Refrigerator capacity approx. L	70	70	70	70	70	70
Heating type	S 3002	S 3002	S 3002	S 3002	S 3002	S 3002
Warm water supply	Truma-Therme (0)	Truma-Therme (0)	Truma-Therme (0)	Truma-Therme (0)	Truma-Therme (0)	Truma-Therme (0)
Fresh water tank L		(0) 40	(0) 40	(0) 40	(0) 40	(0) 40
Waste water tank L	(0) 40	(0) 40	(0) 40	(0) 40	(0) 40	(0) 40
Awning length approx. cm	730	730	730	730	730	730

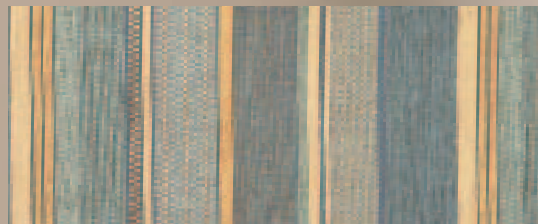
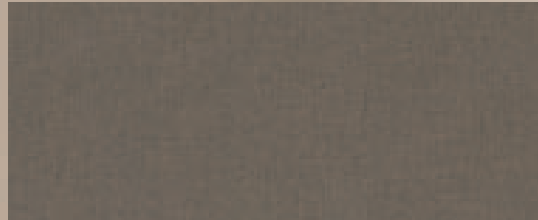
Upholstery / Fabric variations

The upholstery fabric combination for your ERIBA-Touring is a key feature in your interior design.
An upholstery of your choice enables you to give your caravan your personal touch.

The ERIBA-Touring models are available in either Malmö or Avignon upholstery which are supplied in their flame retardant versions to UK specification.



Malmö



Avignon





EC Directive:

The EC Directives 70/156/EEC as amended in 2001/116/EC and EN 1645-2 mean we have to take leave of the terms „maximum permitted laden mass“ and „unladen weight“ we are so familiar with. But that's not all.

The new terms „technically admissible maximum laden mass“ and „mass of vehicle in running order“ also have a different meaning. „Unladen weight“ is no longer just unladen, but relates to the mass with gas supply, water, etc.. Your advantage is that you now have a properly defined, pan-European standard of comparison by which many manufacturers abide.

Technically admissible maximum laden mass means just as much as maximum permitted laden mass: mass of vehicle in running order plus load. Mass of vehicle in running order means: weighed with 100 % filled gas supply, 100 % filled water tank and cable drum. Please note: The admissible towable load of the motor car according to your motor vehicle registration certificate basically relates to the actual weight of the trailer and not to the maximum admissible laden mass of the caravan. If, for example, a towable load of 1200 kg is registered in your car papers, you are allowed to tow a caravan with a higher admissible laden mass, but may load it only up to 1200 kg maximum plus permitted drawbar load.

Note:

This brochure comprises the status of the series at the time of going to press. Some of the illustrations show optional extras.

Although the content has been checked, printing errors cannot be excluded.

We reserve the right to modify the equipment or make improvements to the product in the course of the model year.

Please inform yourself about the current product and series status at one of our authorised HYMER contract partners before concluding purchase.

Some vehicles include optional extras which are quoted in the current price list and available at extra cost. The decoration shown is not supplied by HYMER. The details of scope of delivery, appearance, performance, dimensions and weights of the vehicles – deviations within the factory tolerance limits (+/- 5% max.) are possible and permissible – are valid at the time of going to press and apply to Ole and registration within Germany. They may change between the present time and the time of purchase or delivery. Your HYMER contract partner will gladly provide information on changes and the standard scope of delivery.

Copyright by HYMER AG.

HYMER AKTIENGESELLSCHAFT
Postfach 1140
88330 Bad Waldsee
Telefon 07524/999-0
Telefax 07524/999-220
www.hymer.com



Experience tomorrow today