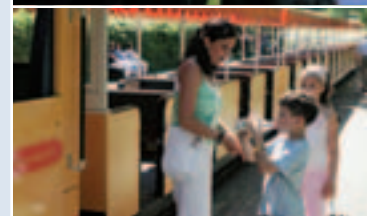
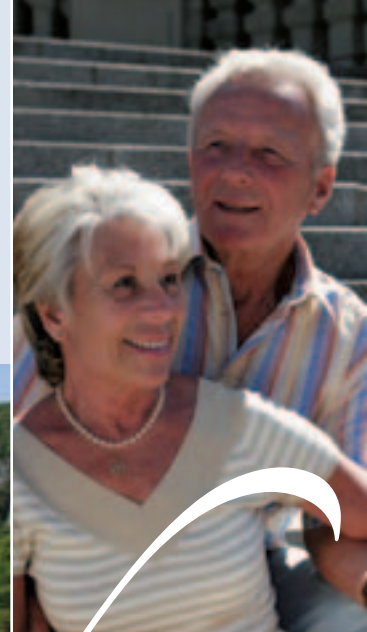


ERIBA-Touring 2007



# Delight

**EHYMER**  
Experience tomorrow today



# *Experience the delight*



Succumb to the delight of the world of ERIBA-Touring caravans. Enjoy the charm of boundless holiday cheer. Experience a special feeling of freedom.

The ERIBA-Touring will make all your travels an unforgettable experience.

The elevating roof design, lowered for touring, ensures the ERIBA-Tourings low profile and unrivalled road holding qualities – tailor made for carefree travels.

As you read through this brochure describing the ERIBA-Touring models you will see how the ERIBA Touring presents you with the wonder of space utilization which when coupled with a love of detail allows the Touring range to provide a comfortable and functional environment which will be appreciated by even the most discerning.

# Contents



## Eriba-Touring

The classical caravan with the successful concept.  
Aerodynamic and streamlined with ideal road-holding characteristics.

4

## Eriba-Touring

## Technical details

10

## Layout versions

12

## Upholstery / Fabric variations

15

*Eriba-Touring*

*Freedom*



The Eriba-Touring caravans have won over a legion of enthusiasts in a time span of almost 50 years thanks to the tried-and-tested AERO system with the legendary tubular steel frame. Not only are the ERIBA-Touring highly thought of, they are highly sought after as a result of their compact dimensions, streamlining, low weight and longevity.

Spare wheel cover shown throughout this catalogue is an optional extra.



*Harmony*



*Comfort*



*F*eel-good factor, thanks to the harmonious coordination of the furniture and furnishing accessories. We offer two versions of upholstery fabric to choose between.

*T*he Touring range of models offers a host of layouts to choose from. Whatever your requirements may be, you'll find a wide range of ideas for the living area here.

*L*avish living on a small footprint: this is what the Eriba-Touring models masterfully display.



*t*



# Superior

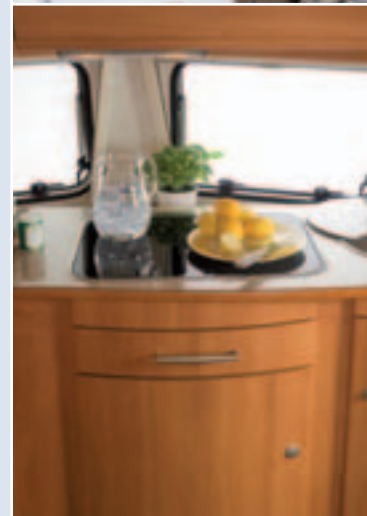
*D*espite the compact dimensions, there's no need to forego any comfort in the Eriba-Touring models.

The kitchen illustrated is very spacious and provides sufficient space for all the utensils required. All the supplies are safely stowed away.

Here you'll find everything you're looking for on long tours. The spacious top cupboards provide a good amount of storage space.

The well thought-out kitchen scheme includes a generous refrigerator with plenty of room for your refreshments.

*T*he washroom in the Eriba-Touring demonstrates that spaciousness and ample storage units are possible even in a small area: comfort is a big priority here. Practical trays, cupboards and effective lighting add the finishing touches.





# Touring Technology



Forty-five years ago the first ERIBA caravan was conceived, built around a revolutionary concept and perfected by an aeronautics engineer.

The tubular steel frame structure (as shown opposite) which makes up the skeleton of an ERIBA-Touring caravan, has proved itself over the decades. It is yet to be superseded as one of the best solutions ever designed to give rigidity to the whole unit.

This unique design element allows for an aerodynamic shape but also an optimum weight ratio. This gives every ERIBA-Touring caravan incomparable road holding properties.

The tubular steel frame structure is insulated to ensure no cold spots to attract condensation on the inner panel, and is used to mount all the furniture inside the caravan, as well as an anchor point for any external accessories which are to be fixed to the caravan.

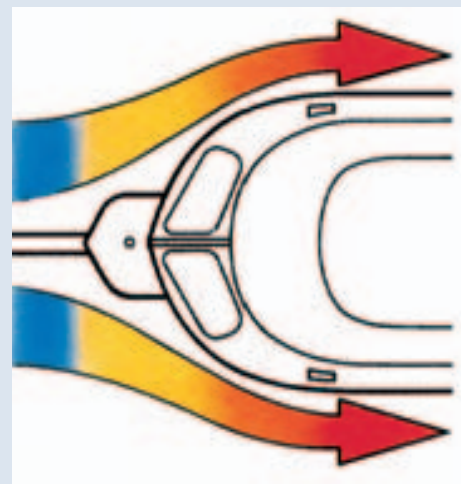
This ensures a very long life. There are enough veteran ERIBA's still on the road today to prove it!



**6-year water  
ingress warranty**

See separate warranty terms.

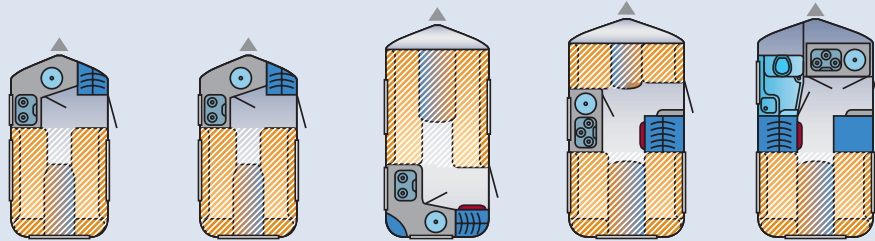
## Touring design



Unrivalled aerodynamics combined with low weight and a low centre of gravity give the ERIBA remarkable road holding and manoeuvrability.

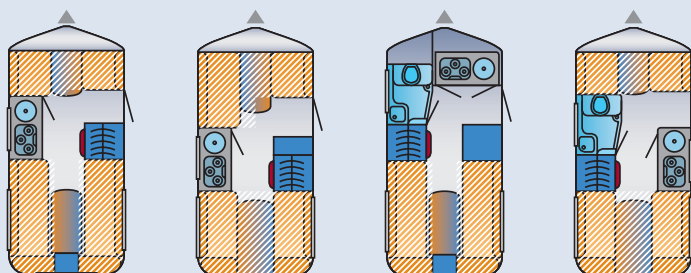


# Technical data: Eriba-Touring



	Puck 120	Puck 120 GT	Puck 230 GT	Familia 310 GT	Familia 320 GT
Overall length ca. cm	425	425	475	475	475
Body length approx. cm	320	320	355	362	362
Overall Width approx. cm	165	165	180	200	200
Overall Height approx. cm	198	198	205	220	220
Internal Length approx. cm	315	315	350	357	357
Internal Width approx. cm	155	155	170	190	190
Maximum headroom approx. cm	183	183	187	187	187
Unladen weight approx. kg	470	480	620	680	700
Mass in running order approx. kg	500	510	650	710	730
Maximum permitted laden mass kg	700	700	790/850 (0)	850((0) 900	900
Maximum payload approx. kg	200	190	140/200	140/190	170
Axle	Mono	Mono	Mono	Mono	Mono
Tyre size	155 R 13 79 T	155 R 13 79 T	155R1379T(0165R1382T)	165R 13 82T	165 R 13 82 T
Maximum permitted nose weight	75	75	75	75	75
Floor thickness mm	25	25	25	35	35
Wall/roof insulation approx. mm	25	25	25	25	25
Berths	2	2	2	3/ (BB) 4	2
Bed size front L x W approx. cm			190/193x170	188x70	
Bed size middle L x W approx. cm					
Bed size rear L x W approx. cm	177/194x150	177/194x150		188x140	188x140
Bunk bed size approx. cm				o: 70/57x185 u:64/50x178	
Maximum bunk loading kg				40	
Washroom W x D approx. cm					100x73/68
Wardrobe W x D x H approx. cm	47x100x45	47x100x45	56x92x48	51,5 x 117 x 51	54x117x51
Refrigerator capacity approx. L	60	60	70	70	70
Heating type	S 2200 (0)	S 2200 (0)	S 2200	S 3002	S 3002
Warm water supply					Truma-Therme (0)
Fresh water tank L			(0) 40	(0) 40	(0) 40
Waste water tank L			(0) 20	(0) 40	(0) 40
Awning length approx. cm	575	575	610	635	635

# Technical data: Eriba-Touring



	Triton 410 GT	Triton 418 GT	Triton 420 GT	Triton 430 GT
Overall length ca. cm	518	518	518	518
Body length approx. cm	421	421	421	421
Overall Width approx. cm	200	200	200	200
Overall Height approx. cm	220	220	220	220
Internal Length approx. cm	416	416	416	416
Internal Width approx. cm	190	190	190	190
Maximum headroom approx. cm	187	187	187	187
Unladen weight approx. kg	770	770	800	800
Mass in running order approx. kg	800	800	830	830
Maximum permitted laden mass kg	1000/1200 (O)	1000/1200 (O)	1000/1200 (O)	1000/1200 (O)
Maximum payload approx. kg	200/400	200/400	170/370	170/370
Axle	Mono	Mono	Mono	Mono
Tyre size	185/70R1386T/195/70R1491T	185/70R1386T/195/70R1491T	185/70R1386T/195/70R1491T	185/70R1386T/195/70R1491T
Maximum permitted nose weight	100	100	100	100
Floor thickness mm	35	35	35	35
Wall/roof insulation approx. mm	25	25	25	25
Berths	3/ (BB) 4	4	2	3 / (BB) 4
Bed size front L x W approx. cm	188x70	188x120		188x70
Bed size middle L x W approx. cm				
Bed size rear L x W approx. cm	197/190x188(D)/2x197x75(TB)	188x140/147	197/190x188(D)/2x197x75(TB)	188x140/147
Bunk bed size approx. cm	o: 70/61 x185 u: 64/55x178			o: 70/61x185 u: 64/55x178
Maximum bunk loading kg	40			40
Washroom W x D approx. cm			100x73/68	100x73/68 / FW 100x42
Wardrobe W x D x H approx. cm	51,5x117x51	54x51x117	54x117x51	54x117x51
Refrigerator capacity approx. L	70	70	70	70
Heating type	S 3002	S 3002	S 3002	S 3002
Warm water supply			Truma-Therme(O)	Truma-Therme (O)
Fresh water tank L	(O) 40	(O) 40	(O) 40	(O) 40
Waste water tank L	(O) 40	(O) 40	(O) 40	(O) 40
Awning length approx. cm	700	700	700	700

\*

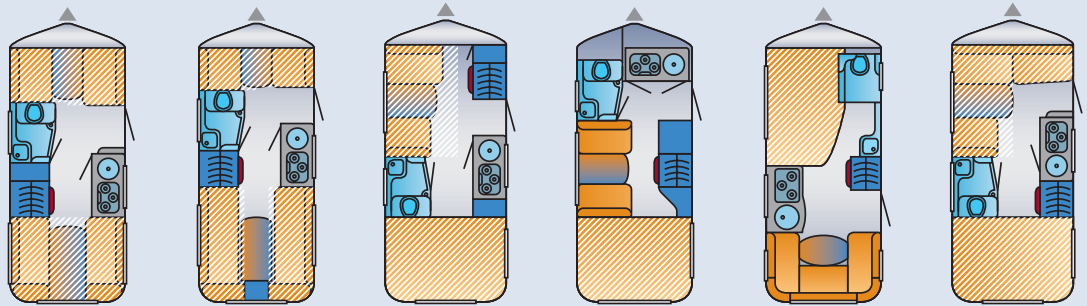
The Mass in Running Order (MRO) indicated is as per EN 1646 – 2 based on a standard version model and is given for illustration purposes only. Actual specification varies depending on the model chosen. Full details are available from your Hymer dealer.

MRO \*

Mass in Running Order in kg includes the weight of the gas cylinder and freshwater tank both to 100% of their capacity (This has been equated to 30 Kg)

S Standard  
 O Optional  
 - Not Applicable  
 D Dinette  
 TB Twin Beds  
 BB Bunk Beds  
 FW Fold Out Washroom

# Technical Data Eriba-Touring



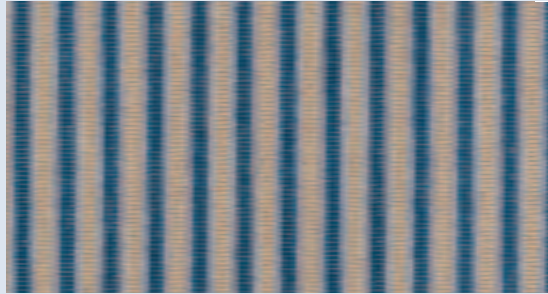
	Troll 530 GT	Troll 540 GT	Troll 550 GT	Troll 552 GT	Troll 554 GT	Troll 555 GT
Overall length ca. cm	568	568	576	576	576	576
Body length approx. cm	471	471	471	471	471	471
Overall Width approx. cm	200	200	210	210	210	210
Overall Height approx. cm	220	220	220	220	220	220
Internal Length approx. cm	466	466	466	466	466	466
Internal Width approx. cm	190	190	200	200	200	200
Maximum headroom approx. cm	187	187	187	187	187	187
Unladen weight approx. kg	870	910	930	930	930	935
Mass in running order approx. kg	900	940	960	960	960	965
Maximum permitted laden mass kg	1200	1200	1200/1300 (O)	1200/1300 (O)	1200/1300 (O)	1200/1300 (O)
Maximum payload approx. kg	300	260	240/340	240/340	240/340	235/335
Axle	Mono	Mono	Mono	Mono	Mono	Mono
Tyre size	185 R 14 C 102	185 R 14 C 102	185 R 14 C 102	185 R 14 C 102	185 R 14 C 102	185 R 14 C 102
Maximum permitted nose weight	100	100	100	100	100	100
Floor thickness mm	35	35	35	35	35	35
Wall/roof insulation approx. mm	25	25	25	25	25	25
Berths	3	3 / (BB) 4	4	2/3 (O)	2/ 3 (O)	3 // D 4
Bed size front L x W approx. cm	188x93	188x70	180x120		194/134/94	195x120/180x120/195x120/195x120/195x120/195x120
Bed size middle L x W approx. cm				160 x 90 (O)		
Bed size rear L x W approx. cm	188x140/147	190/197x188 (D) 2x197x75 (TB)	195x140	195 x 140	195x116/111 (O)	195x140
Bunk bed size approx. cm		o: 70/61x185 u: 64/55x178				
Maximum bunk loading kg		40				
Washroom W x D approx. cm	100x73/68 (FW) 100x42	100x73/68 FW 100x42	100x73/68	100x73/68	813x550	100x73/68
Wardrobe W x D x H approx. cm	54x117x51	54x117x51	53x117x40	53 x 100 x 52	54 x 104 x 50	52 x 117 x 51
Refrigerator capacity approx. L	70	70	70	70	70	70
Heating type	S 3002	S 3002	S 3002	S 3002	S 3002	S 3002
Warm water supply	Truma-Therme (O)	Truma-Therme (O)	Truma-Therme (O)	Truma-Therme (O)	Truma-Therme (O)	Truma-Therme (O)
Fresh water tank L		(O) 40	(O) 40	(O) 40	(O) 40	(O) 40
Waste water tank L	(O) 40	(O) 40	(O) 40	(O) 40	(O) 40	(O) 40
Awning length approx. cm	730	730	730	730	730	730

# Upholstery / Fabric variations

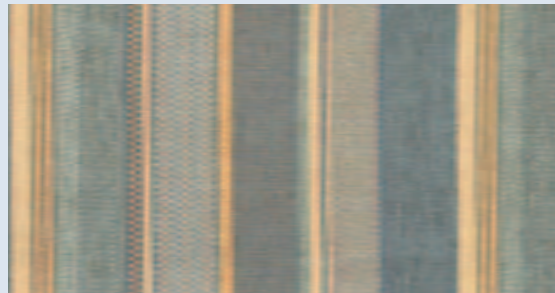
The upholstery fabric combination for your ERIBA-Touring is a key feature in your interior design.

An upholstery of your choice enables you to give your caravan your personal touch.

The ERIBA-Touring models are available in either Stockholm or Avignon upholstery which are supplied in their flame retardant versions to UK specification.



Stockholm



Avignon

## Note:

This brochure comprises the status of the series at the time of going to press.  
Some of the illustrations show optional extras.

Although the content has been checked, printing errors cannot be excluded.

We reserve the right to modify the equipment or make improvements to the product in the course of the model year.

Please inform yourself about the current product and series status at one of our authorised HYMER contract partners before concluding purchase.

## EC Directive:

The EC Directives 70/156/EEC as amended in 2001/116/EC and EN 1645-2 mean we have to take leave of the terms „maximum permitted laden mass“ and „unladen weight“ we are so familiar with. But that's not all.

The new terms „technically admissible maximum laden mass“ and „mass of vehicle in running order“ also have a different meaning. „Unladen weight“ is no longer just unladen, but relates to the mass with gas supply, water, etc.. Your advantage is that you now have a properly defined, pan-European standard of comparison by which many manufacturers abide.

Technically admissible maximum laden mass means just as much as maximum permitted laden mass: mass of vehicle in running order plus load. Mass of vehicle in running order means: weighed with 100 % filled gas supply, 100 % filled water tank and cable drum. Please note: The admissible towable load of the motor car according to your motor vehicle registration certificate basically relates to the actual weight of the trailer and not to the maximum admissible laden mass of the caravan. If, for example, a towable load of 1200 kg is registered in your car papers, you are allowed to tow a caravan with a higher admissible laden mass, but may load it only up to 1200 kg maximum plus permitted drawbar load.

09/2006/18.900 GB

HYMER AKTIENGESELLSCHAFT  
Postfach 1140  
D-88330 Bad Waldsee/Germany  
Telephone (+49)7524/999-0  
Telefax (+49)7524/999-312  
[www.hymer.com](http://www.hymer.com)

The logo features the word "HYMER" in a bold, blue, sans-serif font. To the left of the text is a stylized graphic consisting of three horizontal, parallel lines that curve upwards at their right ends, resembling a stylized 'H' or a set of wings.

Experience tomorrow today

Some vehicles include optional extras which are quoted in the current price list and available at extra cost. The decoration shown is not supplied by HYMER. The details of scope of delivery, appearance, performance, dimensions and weights of the vehicles – deviations within the factory tolerance limits (+/- 5% max.) are possible and permissible – are valid at the time of going to press and apply to Ole and registration within Germany. They may change between the present time and the time of purchase or delivery. Your HYMER contract partner will gladly provide information on changes and the standard scope of delivery.  
Copyright by HYMER AG.